

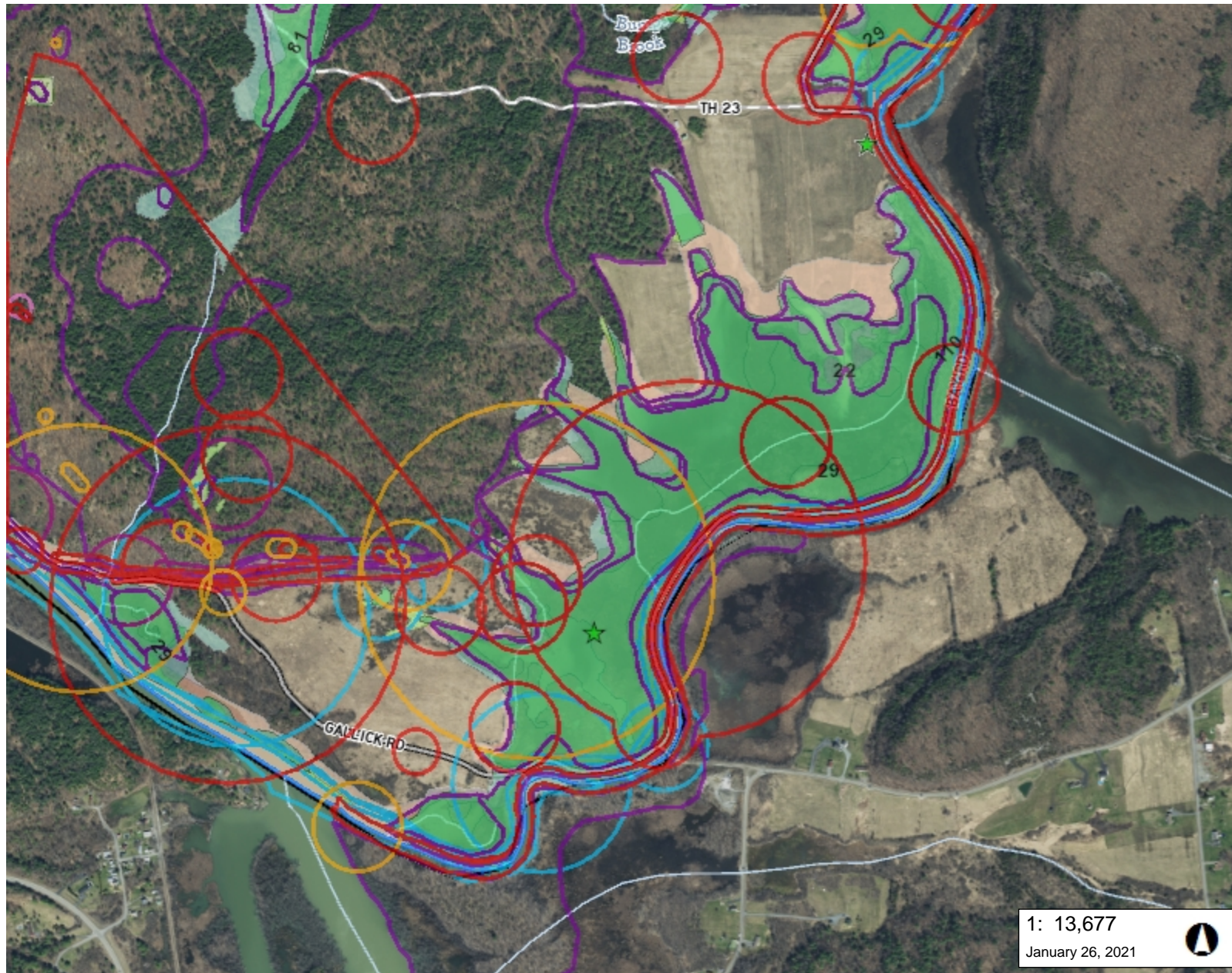


# Wards Marsh Location

Vermont Agency of Natural Resources

## Wards Marsh Location ANR Map

vermont.gov



### LEGEND

- Wetland
- Wetland Projects
- Rare Threatened Endangered**
  - Threatened or Endangered
  - Rare
- Significant Natural Community
  - Uncommon Species and Other**
    - Animal
    - Plant
    - Natural Community
  - Vernal Pools Confirmed – AE/
  - Vernal Pools Unconfirmed – AI
- VT List of Priority Rivers and S**
  - Part B (impaired TMDL not requirec
  - Part C (stressed needs more asses
  - Part D (impaired with approved TMI
  - Part E (altered exotic species)
  - Part F (altered flow regulation)
  - Part G (channel alteration)
- VT List of Priority Lakes and P**
  - Part B (impaired TMDL not requirec
  - Part C (stressed needs more asses
  - Part D (impaired with approved TMI
  - Part E (altered exotic species)
  - Part F (altered flow regulation)
- Wetlands - VSWI**
  - Class 1 Wetland
  - Class 2 Wetland
  - Buffer

1: 13,677

January 26, 2021



695.0 0 348.00 695.0 Meters

WGS\_1984\_Web\_Mercator\_Auxiliary\_Sphere

© Vermont Agency of Natural Resources

1" = 1140 Ft. 1cm = 137 Meters

THIS MAP IS NOT TO BE USED FOR NAVIGATION

DISCLAIMER: This map is for general reference only. Data layers that appear on this map may or may not be accurate, current, or otherwise reliable. ANR and the State of Vermont make no representations of any kind, including but not limited to, the warranties of merchantability, or fitness for a particular use, nor are any such warranties to be implied with respect to the data on this map.

IMPORTANT!: The Wetlands Viewer is designed to help the public research wetland locations and features. Only a qualified wetland scientist may determine the absence or presence of a wetland and the boundaries. Not all wetlands are mapped. Wetlands not mapped on the Vermont Significant Wetland Inventory may still be considered significant.

